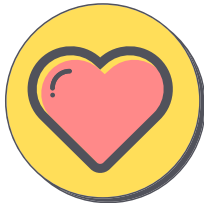


CHARACTER STRENGTHS

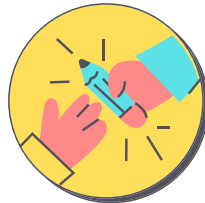


POSITIVE
MINDS

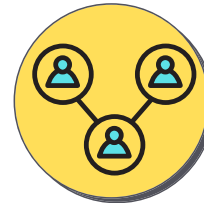
Do you recognise any of these strengths within yourself?



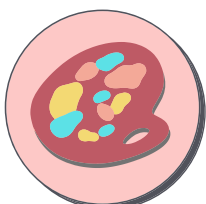
LOVE



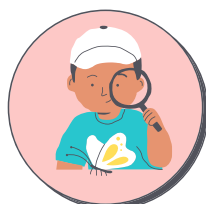
KINDNESS



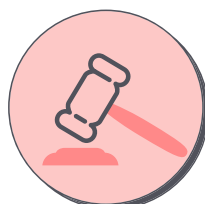
SOCIAL INTELLIGENCE



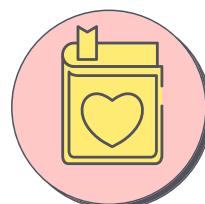
CREATIVITY



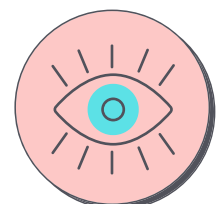
CURIOSITY



JUDGEMENT



LOVE OF LEARNING



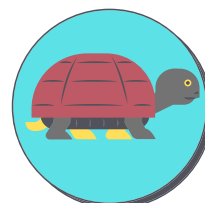
PERSPECTIVE



BRAVERY



HONESTY



PERSEVERANCE



ZEST



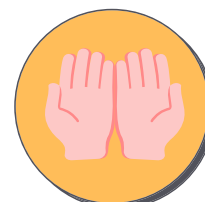
AWE



GRATITUDE



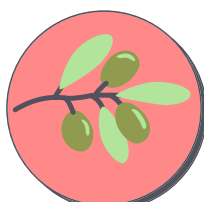
HUMOUR



SPIRITUALITY



HOPE



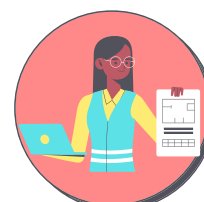
FORGIVENESS



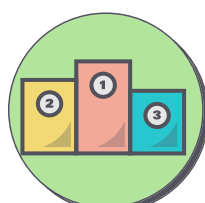
PRUDENCE



HUMILITY



SELF REGULATION



LEADERSHIP



JUSTICE



TEAMWORK